

STANDARD DEPARTURE CHART  
INSTRUMENT(SID) - ICAO

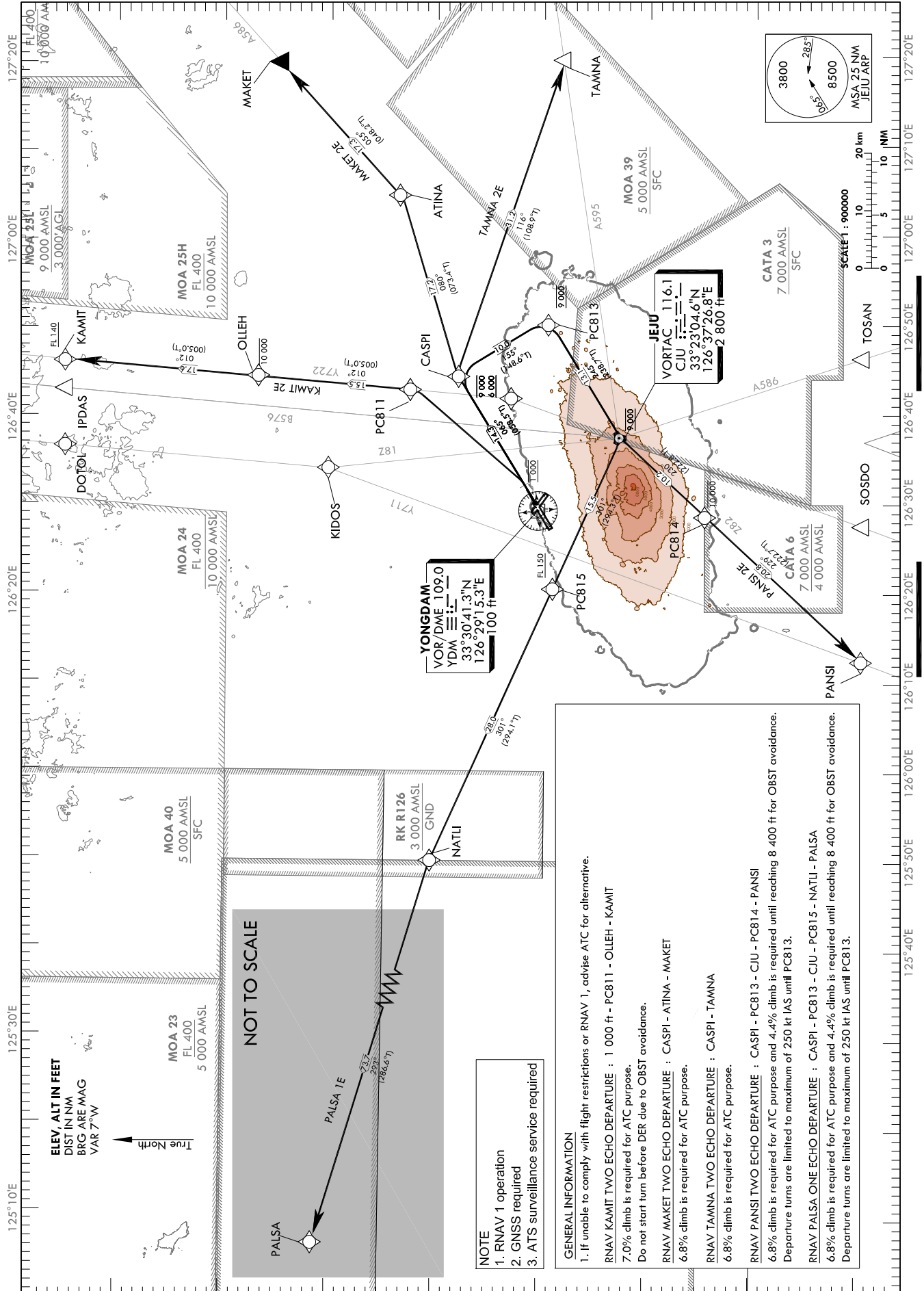
TRANSITION ALT 14 000  
TRANSITION LVL FL 140

JEJU DEP 119.225  
121.2  
JEJU TWR 118.125  
118.2

JEJU/Jeju Intl(RKPC)  
RWY 07

RNAV KAMIT 2E  
RNAV MAKET 2E, RNAV TAMNA 2E  
RNAV PANSI 2E, RNAV PALSA 1E

Note : Departure under ICAO Flight Procedures.



**YONGDAM**  
VOR/DME 109.0  
YDM  
33°30'41.3"N  
126°29'15.3"E  
1100 ft

**JEJU**  
VORTAC 116.1  
CJU  
33°23'04.6"N  
126°37'26.8"E  
2 800 ft

ELEV, ALT IN FEET  
DIST IN NM  
BRG ARE MAG  
VAR 7°W  
True North

NOT TO SCALE

**NOTE**  
1. RNAV 1 operation  
2. GNSS required  
3. ATIS surveillance service required

**GENERAL INFORMATION**  
1. If unable to comply with flight restrictions or RNAV 1, advise ATC for alternative.  
RNAV KAMIT TWO ECHO DEPARTURE : 1 000 ft - PC811 - OLLEH - KAMIT  
7.0% climb is required for ATC purpose.  
Do not start turn before DER due to OBST avoidance.  
RNAV MAKET TWO ECHO DEPARTURE : CASPI - ATINA - MAKET  
6.8% climb is required for ATC purpose.  
RNAV TAMNA TWO ECHO DEPARTURE : CASPI - TAMNA  
6.8% climb is required for ATC purpose.  
RNAV PANSI TWO ECHO DEPARTURE : CASPI - PC813 - CJU - PC814 - PANSI  
6.8% climb is required for ATC purpose and 4.4% climb is required until reaching 8 400 ft for OBST avoidance.  
Departure turns are limited to maximum of 250 kt IAS until PC813.  
RNAV PALSA ONE ECHO DEPARTURE : CASPI - PC813 - CJU - PC815 - NATLI - PALSA  
6.8% climb is required for ATC purpose and 4.4% climb is required until reaching 8 400 ft for OBST avoidance.  
Departure turns are limited to maximum of 250 kt IAS until PC813.

Change : Amended coordinate format.

JEJU/Jeju Intl(RKPC)  
RWY 07

RNAV KAMIT 2E

RNAV MAKET 2E, RNAV TAMNA 2E

RNAV PANSI 2E, RNAV PALSA 1E

AERONAUTICAL DATA TABULATION

Standard Instrument Departure Procedure Coding Tables

RNAV KAMIT 2E												
Serial Number	Path Descriptor	Waypoint Identifier	Fly-over	Course/Track °M(T)	Distance (NM)	Turn direction	Altitude (ft)	Speed (kt)	Coordinates	VPA/RDH	Navigation specification	Remarks
001	CA	-	-	065(058.5)	-	-	@1 000	-		-	RNAV 1	-
002	DF	PC811	-	-	-	L	-	-	33°42'12.1"N 126°42'48.8"E	-	RNAV 1	-
003	TF	OLLEH	-	012(005.0)	15.5	-	-10 000	-	33°57'42.2"N 126°44'26.5"E	-	RNAV 1	-
004	TF	KAMIT	-	012(005.0)	17.6	-	+FL 140	-	34°15'14.1"N 126°46'17.7"E	-	RNAV 1	-

RNAV MAKET 2E												
Serial Number	Path Descriptor	Waypoint Identifier	Fly-over	Course/Track °M(T)	Distance (NM)	Turn direction	Altitude (ft)	Speed (kt)	Coordinates	VPA/RDH	Navigation specification	Remarks
001	CF	CASPI	-	065(058.5)	14.3	-	-9 000 +6 000	-	33°38'27.2"N 126°44'37.4"E	-	RNAV 1	-
002	TF	ATINA	-	080(073.4)	17.2	-	-	-	33°43'20.2"N 127°04'23.2"E	-	RNAV 1	-
003	TF	MAKET	-	055(048.2)	17.3	-	-	-	33°54'52.4"N 127°19'53.0"E	-	RNAV 1	-

RNAV TAMNA 2E												
Serial Number	Path Descriptor	Waypoint Identifier	Fly-over	Course/Track °M(T)	Distance (NM)	Turn direction	Altitude (ft)	Speed (kt)	Coordinates	VPA/RDH	Navigation specification	Remarks
001	CF	CASPI	-	065(058.5)	14.3	-	-9 000 +6 000	-	33°38'27.2"N 126°44'37.4"E	-	RNAV 1	-
002	TF	TAMNA	-	116(108.9)	31.2	-	-	-	33°28'15.5"N 127°19'53.0"E	-	RNAV 1	-

RNAV PANSI 2E												
Serial Number	Path Descriptor	Waypoint Identifier	Fly-over	Course/Track °M(T)	Distance (NM)	Turn direction	Altitude (ft)	Speed (kt)	Coordinates	VPA/RDH	Navigation specification	Remarks
001	CF	CASPI	-	065(058.5)	14.3	-	-	-250	33°38'27.2"N 126°44'37.4"E	-	RNAV 1	-
002	TF	PC813	-	155(148.6)	10.0	-	@9 000	-250	33°29'55.5"N 126°50'50.0"E	-	RNAV 1	-
003	TF	CJU	-	245(238.7)	13.1	-	@9 000	-	33°23'04.6"N 126°37'26.8"E	-	RNAV 1	-
004	TF	PC814	-	230(222.8)	10.2	-	-10 000	-	33°15'36.4"N 126°29'13.5"E	-	RNAV 1	-
005	TF	PANSI	-	229(222.7)	20.8	-	-	-	33°00'14.4"N 126°12'25.1"E	-	RNAV 1	-

RNAV PALSA 1E												
Serial Number	Path Descriptor	Waypoint Identifier	Fly-over	Course/Track °M(T)	Distance (NM)	Turn direction	Altitude (ft)	Speed (kt)	Coordinates	VPA/RDH	Navigation specification	Remarks
001	CF	CASPI	-	065(058.5)	14.3	-	-	-250	33°38'27.2"N 126°44'37.4"E	-	RNAV 1	-
002	TF	PC813	-	155(148.6)	10.0	-	@9 000	-250	33°29'55.5"N 126°50'50.0"E	-	RNAV 1	-
003	TF	CJU	-	245(238.7)	13.1	-	@9 000	-	33°23'04.6"N 126°37'26.8"E	-	RNAV 1	-
004	TF	PC815	-	301(294.3)	15.5	-	+FL 150	-	33°29'26.6"N 126°20'33.3"E	-	RNAV 1	-
005	TF	NATLI	-	301(294.1)	28	-	-	-	33°40'51.9"N 125°49'53.2"E	-	RNAV 1	-
006	TF	PALSA	-	293(286.6)	73.7	-	-	-	34°01'31.2"N 124°24'52.6"E	-	RNAV 1	-

Change : Amended coordinate format.

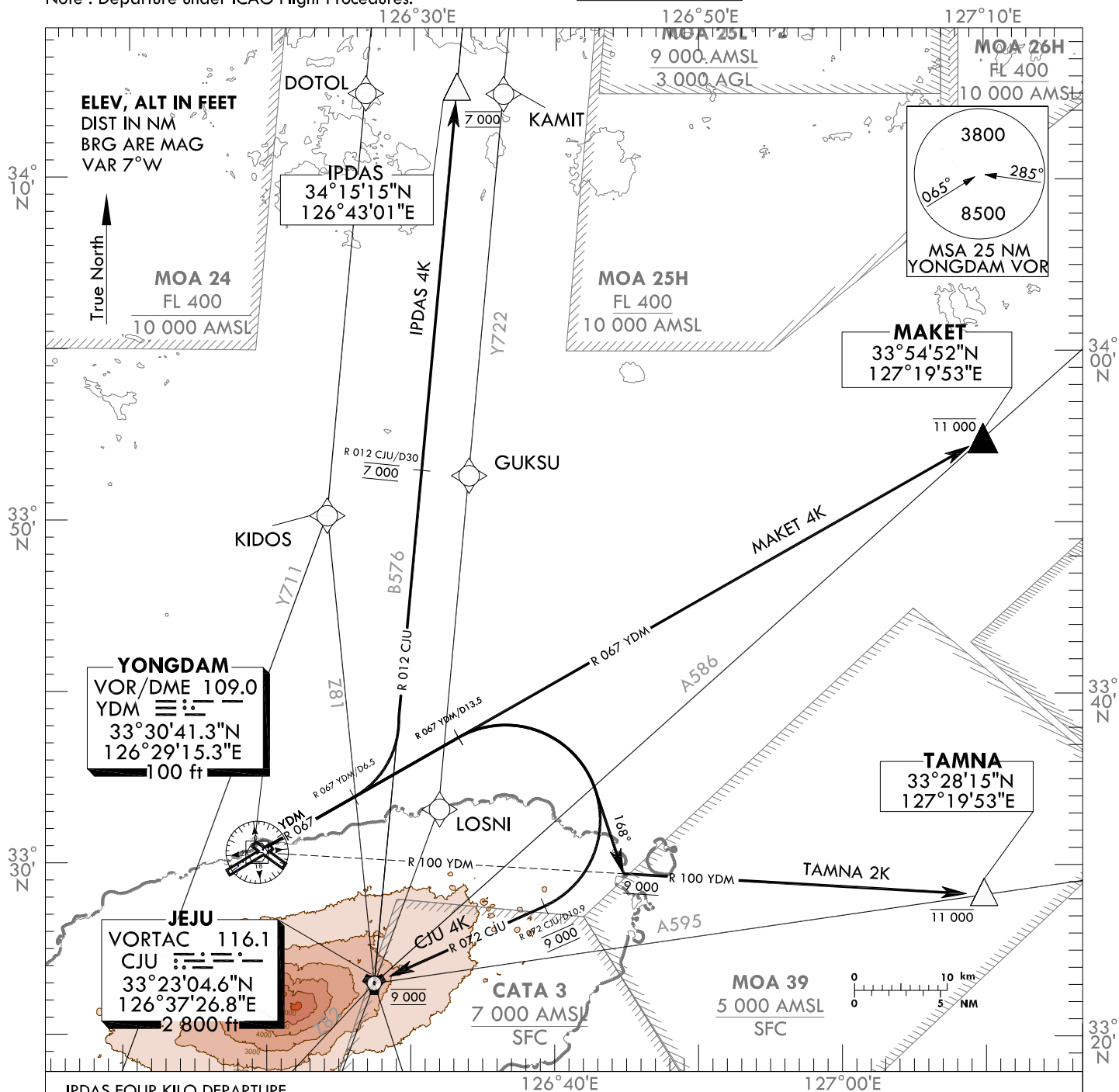
**STANDARD DEPARTURE CHART  
INSTRUMENT(SID) - ICAO**

TRANSITION ALT 14 000  
TRANSITION LVL FL 140

JEJU DEP 119.225  
121.2  
JEJU TWR 118.125  
118.2

**JEJU/Jeju Intl(RKPC)**  
**RWY 07**  
**IPDAS 4K, MAKET 4K**  
**TAMNA 2K, CJU 4K**

Note : Departure under ICAO Flight Procedures.



**IPDAS FOUR KILO DEPARTURE**

Climb on R 067 YDM until D6.5, then turn Left to intercept R 012 CJU then proceed direct to IPDAS.  
\* Minimum 4.9% CG is required for ATC purpose.  
\* Cross R 012 CJU/D30 at 7 000 ft and maintain 7 000 ft unless otherwise directed by ATC.

**MAKET FOUR KILO DEPARTURE**

Climb on R 067 YDM, then proceed direct to MAKET.  
\* Cross MAKET at or below 11 000 ft unless otherwise directed by ATC.

**TAMNA TWO KILO DEPARTURE**

Climb on R 067 YDM until D13.5, then turn Right HDG 168° to intercept R 100 YDM then proceed direct to TAMNA.  
\* Minimum 5.4% CG is required for ATC purpose.  
\* Maintain at or above 9 000 ft before intercepting R 100 YDM and Cross TAMNA at or below 11 000 ft unless otherwise directed by ATC.

**CJU FOUR KILO DEPARTURE**

Climb on R 067 YDM until D13.5, then turn Right to intercept R 072 CJU/D10.9, then proceed direct to CJU.  
\* Minimum 5.4% CG is required for ATC purpose and 3.8% CG is required until 6 800 ft for OBST avoidance.  
\* Cross R 072 CJU/D10.9 at 9 000 ft and maintain 9 000 ft unless otherwise directed by ATC.

Change : Amended coordinate and radial format.

**INTENTIONALLY**

**LEFT**

**BLANK**

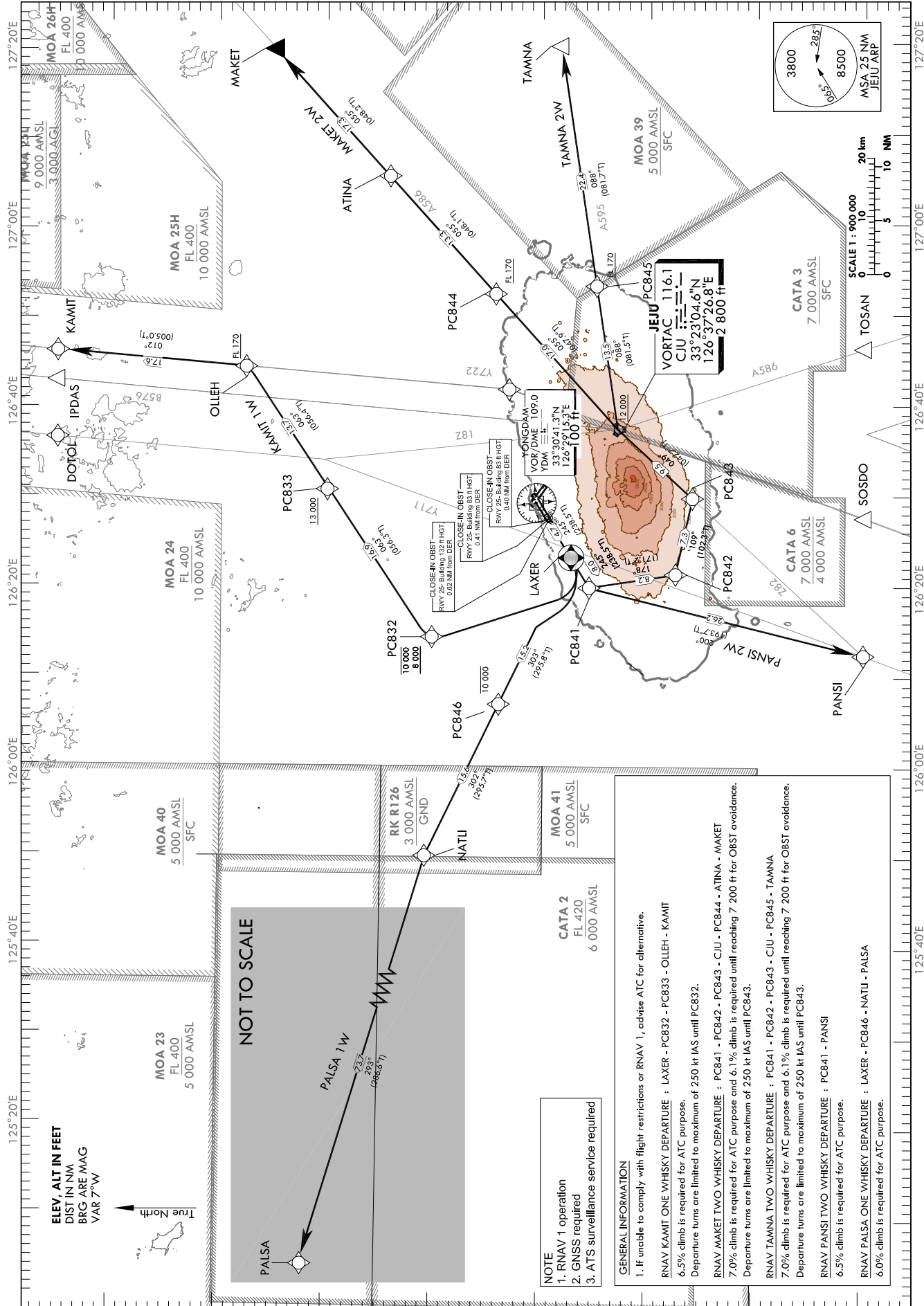
**STANDARD DEPARTURE CHART  
INSTRUMENT(SID) - ICAO**

TRANSITION ALT 14 000  
TRANSITION LVL FL 140

JEJU DEP 119.225  
121.2  
JEJU TWR 118.125  
118.2

**JEJU/Jeju Intl(RKPC)**  
RWY 25  
RNAV KAMIT 1W, RNAV MAKET 2W  
RNAV TAMNA 2W, RNAV PANSI 2W  
RNAV PALSA 1W

Note : Departure under ICAO Flight Procedures.



Change : Amended coordinate format.

**NOTE**  
1. RNAV 1 operation  
2. GNS required  
3. ATIS surveillance service required

**GENERAL INFORMATION**  
1. If unable to comply with flight restrictions or RNAV 1, advise ATC for alternative.  
RNAV KAMIT ONE WHISKY DEPARTURE : LAXER - PC832 - PC833 - OLLEH - KAMIT  
6.5% climb is required for ATC purpose.  
Departure turns are limited to maximum of 250 kt IAS until PC832.  
RNAV MAKET TWO WHISKY DEPARTURE : PC841 - PC842 - PC843 - CIU - PC844 - ATINA - MAKET  
7.0% climb is required for ATC purpose and 6.1% climb is required until reaching 7 200 ft for OBST avoidance.  
Departure turns are limited to maximum of 250 kt IAS until PC843.  
RNAV TAMNA TWO WHISKY DEPARTURE : PC841 - PC842 - PC843 - CIU - PC845 - TAMNA  
7.0% climb is required for ATC purpose and 6.1% climb is required until reaching 7 200 ft for OBST avoidance.  
Departure turns are limited to maximum of 250 kt IAS until PC843.  
RNAV PANSI TWO WHISKY DEPARTURE : PC841 - PANSI  
6.5% climb is required for ATC purpose.  
RNAV PALSA ONE WHISKY DEPARTURE : LAXER - PC846 - NATU - PALSA  
6.0% climb is required for ATC purpose.

**NOT TO SCALE**

JEJU/Jeju Intl(RKPC)  
RWY 25  
RNAV KAMIT 1W, RNAV MAKET 2W

AERONAUTICAL DATA TABULATION

Standard Instrument Departure Procedure Coding Tables

Serial Number	Path Descriptor	Waypoint Identifier	Fly-over	Course/Track °M(°T)	Distance (NM)	Turn direction	Altitude (ft)	Speed (kt)	Coordinates	VPA/TCH	Navigation specification	Remarks
001	CF	LAXER	Y	245(238.5)	4.7	-	-	-250	33°27'28.0"N 126°23'12.0"E	-	RNAV 1	-
002	DF	PC832	-	-	-	R	-10 000 +8 000	-250	33°40'46.0"N 126°13'51.9"E	-	RNAV 1	-
003	TF	PC833	-	063(056.3)	16.9	-	+13 000	-	33°50'08.8"N 126°30'44.8"E	-	RNAV 1	-
004	TF	OLLEH	-	063(056.4)	13.7	-	+FL 170	-	33°57'42.2"N 126°44'26.5"E	-	RNAV 1	-
005	TF	KAMIT	-	012(005.0)	17.6	-	-	-	34°15'14.1"N 126°46'17.7"E	-	RNAV 1	-

Serial Number	Path Descriptor	Waypoint Identifier	Fly-over	Course/Track °M(°T)	Distance (NM)	Turn direction	Altitude (ft)	Speed (kt)	Coordinates	VPA/TCH	Navigation specification	Remarks
001	CF	PC841	-	245(238.5)	8.0	-	-	-250	33°25'42.7"N 126°19'47.8"E	-	RNAV 1	-
002	TF	PC842	-	178(171.2)	8.2	-	-	-250	33°17'38.3"N 126°21'17.3"E	-	RNAV 1	-
003	TF	PC843	-	109(102.3)	7.3	-	-	-250	33°16'05.1"N 126°29'45.1"E	-	RNAV 1	-
004	TF	CJU	-	049(042.7)	9.5	-	+12 000	-	33°23'04.6"N 126°37'26.8"E	-	RNAV 1	-
005	TF	PC844	-	055(047.9)	17.0	-	+FL 170	-	33°34'28.2"N 126°52'33.4"E	-	RNAV 1	-
006	TF	ATINA	-	055(048.1)	13.3	-	-	-	33°43'20.2"N 127°04'23.2"E	-	RNAV 1	-
007	TF	MAKET	-	055(048.2)	17.3	-	-	-	33°54'52.4"N 127°19'53.0"E	-	RNAV 1	-

Change : Amended coordinate format.

JEJU/Jeju Intl(RKPC)  
RWY 25

RNAV TAMNA 2W

RNAV PANSI 2W, RNAV PALSA 1W

AERONAUTICAL DATA TABULATION

Standard Instrument Departure Procedure Coding Tables

RNAV TAMNA 2W

Serial Number	Path Descriptor	Waypoint Identifier	Fly-over	Course/Track °M(°T)	Distance (NM)	Turn direction	Altitude (ft)	Speed (kt)	Coordinates	VPA/TCH	Navigation specification	Remarks
001	CF	PC841	-	245(238.5)	8.0	-	-	-250	33°25'42.7"N 126°19'47.8"E	-	RNAV 1	-
002	TF	PC842	-	178(171.2)	8.2	-	-	-250	33°17'38.3"N 126°21'17.3"E	-	RNAV 1	-
003	TF	PC843	-	109(102.3)	7.3	-	-	-250	33°16'05.1"N 126°29'45.1"E	-	RNAV 1	-
004	TF	CJU	-	049(042.7)	9.5	-	+12 000	-	33°23'04.6"N 126°37'26.8"E	-	RNAV 1	-
005	TF	PC845	-	088(081.5)	13.5	-	+FL 170	-	33°25'03.2"N 126°53'24.0"E	-	RNAV 1	-
006	TF	TAMNA	-	088(081.7)	22.4	-	-	-	33°28'15.5"N 127°19'53.0"E	-	RNAV 1	-

RNAV PANSI 2W

Serial Number	Path Descriptor	Waypoint Identifier	Fly-over	Course/Track °M(°T)	Distance (NM)	Turn direction	Altitude (ft)	Speed (kt)	Coordinates	VPA/TCH	Navigation specification	Remarks
001	CF	PC841	-	245(238.5)	8.0	-	-	-	33°25'42.7"N 126°19'47.8"E	-	RNAV 1	-
002	TF	PANSI	-	200(193.7)	26.2	-	-	-	33°00'14.4"N 126°12'25.1"E	-	RNAV 1	-

RNAV PALSA 1W

Serial Number	Path Descriptor	Waypoint Identifier	Fly-over	Course/Track °M(°T)	Distance (NM)	Turn direction	Altitude (ft)	Speed (kt)	Coordinates	VPA/TCH	Navigation specification	Remarks
001	CF	LAXER	Y	245(238.5)	4.7	-	-	-	33°27'28.0"N 126°23'12.0"E	-	RNAV 1	-
002	TF	PC846	-	303(295.8)	15.2	-	-10 000	-	33°34'06.1"N 126°06'46.3"E	-	RNAV 1	-
003	TF	NATLI	-	302(295.7)	15.6	-	-	-	33°40'51.9"N 125°49'53.2"E	-	RNAV 1	-
004	TF	PALSA	-	293(286.6)	73.7	-	-	-	34°01'31.2"N 124°24'52.6"E	-	RNAV 1	-

Change : Amended coordinate format.

**INTENTIONALLY**

**LEFT**

**BLANK**



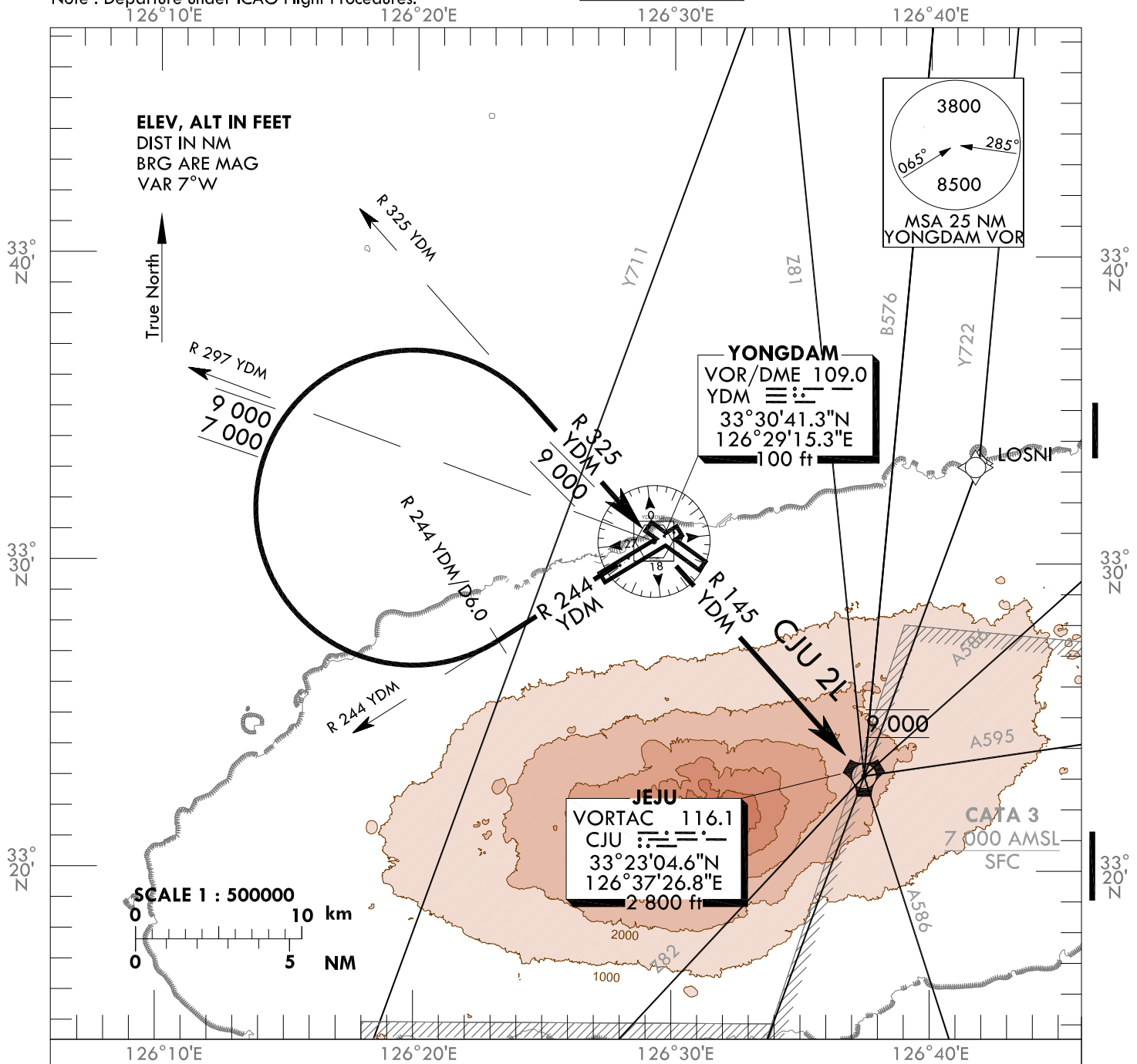
STANDARD DEPARTURE CHART  
INSTRUMENT(SID) - ICAO

TRANSITION ALT 14 000  
TRANSITION LVL FL 140

JEJU DEP 119.225  
121.2  
JEJU TWR 118.125  
118.2

JEJU/Jeju Intl(RKPC)  
RWY 25  
CJU 2L

Note : Departure under ICAO Flight Procedures.



CJU TWO LIMA DEPARTURE

Climb on R 244 YDM until D6, then turn Right direct to YDM via R 325 YDM, then direct to CJU via R 145 YDM.

- \* Minimum 6.0% CG is required for ATC purpose and 4.0% CG is required until 4 500 ft for OBST avoidance.
- \* Cross R 297 YDM between 7 000 ft and 9 000 ft, then YDM at 9 000 ft and maintain 9 000 ft unless otherwise directed by ATC.

Change : Amended coordinate and radial format.

**INTENTIONALLY**

**LEFT**

**BLANK**

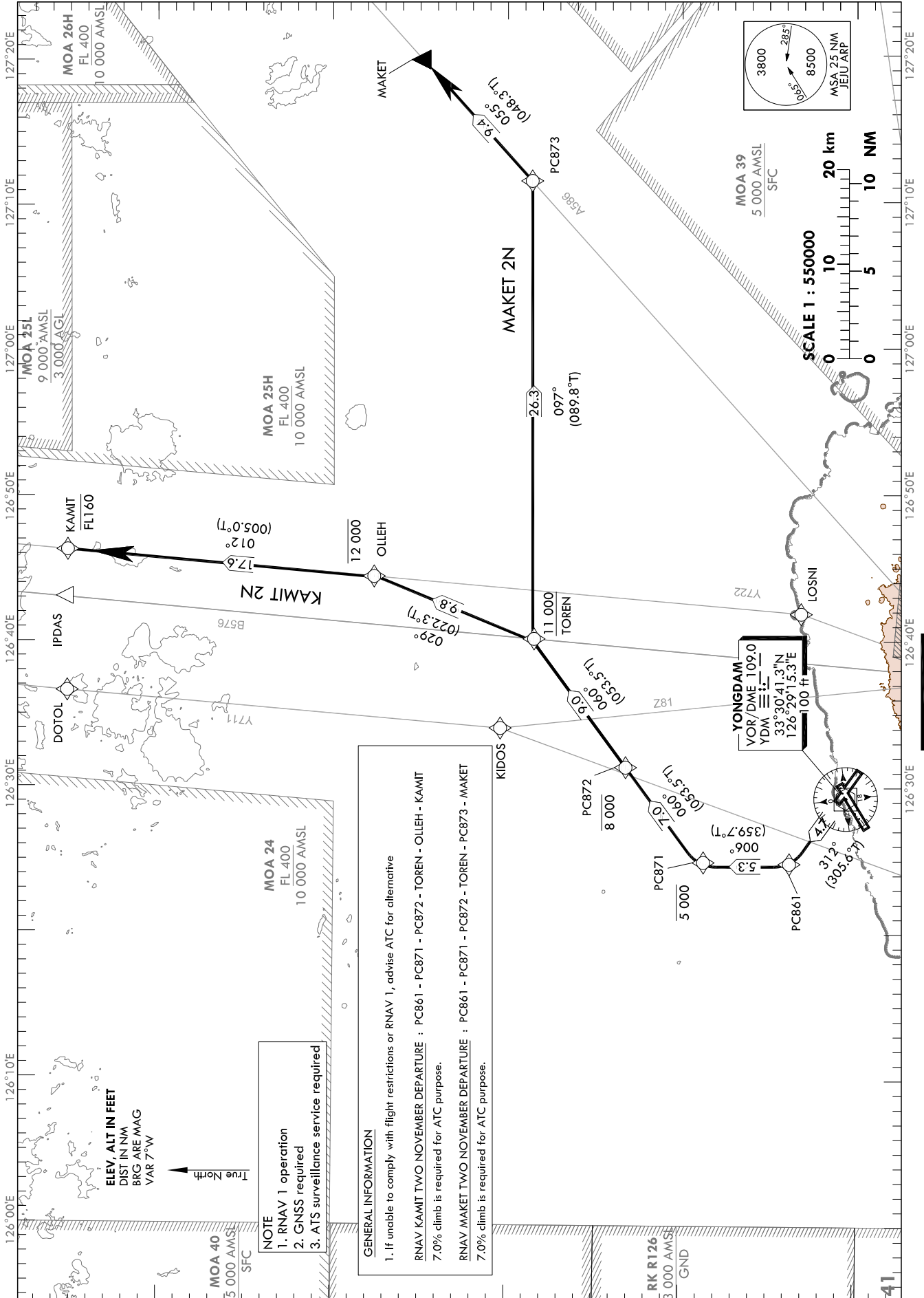
STANDARD DEPARTURE CHART  
INSTRUMENT(SID) - ICAO

TRANSITION ALT 14 000  
TRANSITION LVL FL 140

JEJU DEP 119.225  
121.2  
JEJU TWR 118.125  
118.2

JEJU/Jeju Intl(RKPC)  
RWY 31  
RNAV KAMIT 2N  
RNAV MAKET 2N

Note : Departure under ICAO Flight Procedures.



Change : Amended coordinate format.

JEJU/Jeju Intl(RKPC)  
RWY 31

RNAV KAMIT 2N, RNAV MAKET 2N

AERONAUTICAL DATA TABULATION

Standard Instrument Departure Procedure Coding Tables

RNAV KAMIT 2N

Serial Number	Path Descriptor	Waypoint Identifier	Fly-over	Course/Track °M(°T)	Distance (NM)	Turn direction	Altitude (ft)	Speed (kt)	Coordinates	VPA/TCH	Navigation specification	Remarks
001	CF	PC861	-	312(305.6)	4.7	-	-	-	33°33'43.8"N 126°24'34.1"E	-	RNAV 1	-
002	TF	PC871	-	006(359.7)	5.3	-	-5 000	-	33°39'05.3"N 126°24'32.0"E	-	RNAV 1	-
003	TF	PC872	-	060(053.5)	7.0	-	-8 000	-	33°43'16.9"N 126°31'18.7"E	-	RNAV 1	-
004	TF	TOREN	-	060(053.5)	9.0	-	+11 000	-	33°48'36.8"N 126°39'57.7"E	-	RNAV 1	-
005	TF	OLLEH	-	029(022.3)	9.8	-	-12 000	-	33°57'42.2"N 126°44'26.5"E	-	RNAV 1	-
006	TF	KAMIT	-	012(005.0)	17.6	-	-FL 160	-	34°15'14.1"N 126°46'17.7"E	-	RNAV 1	-

RNAV MAKET 2N

Serial Number	Path Descriptor	Waypoint Identifier	Fly-over	Course/Track °M(°T)	Distance (NM)	Turn direction	Altitude (ft)	Speed (kt)	Coordinates	VPA/TCH	Navigation specification	Remarks
001	CF	PC861	-	312(305.6)	4.7	-	-	-	33°33'43.8"N 126°24'34.1"E	-	RNAV 1	-
002	TF	PC871	-	006(359.7)	5.3	-	-5 000	-	33°39'05.3"N 126°24'32.0"E	-	RNAV 1	-
003	TF	PC872	-	060(053.5)	7.0	-	-8 000	-	33°43'16.9"N 126°31'18.7"E	-	RNAV 1	-
004	TF	TOREN	-	060(053.5)	9.0	-	+11 000	-	33°48'36.8"N 126°39'57.7"E	-	RNAV 1	-
005	TF	PC873	-	097(089.8)	26.3	-	-	-	33°48'37.9"N 127°11'29.2"E	-	RNAV 1	-
006	TF	MAKET	-	055(048.3)	9.4	-	-	-	33°54'52.4"N 127°19'53.0"E	-	RNAV 1	-

Change : Amended coordinate format.

**STANDARD DEPARTURE CHART  
INSTRUMENT(SID) - ICAO**

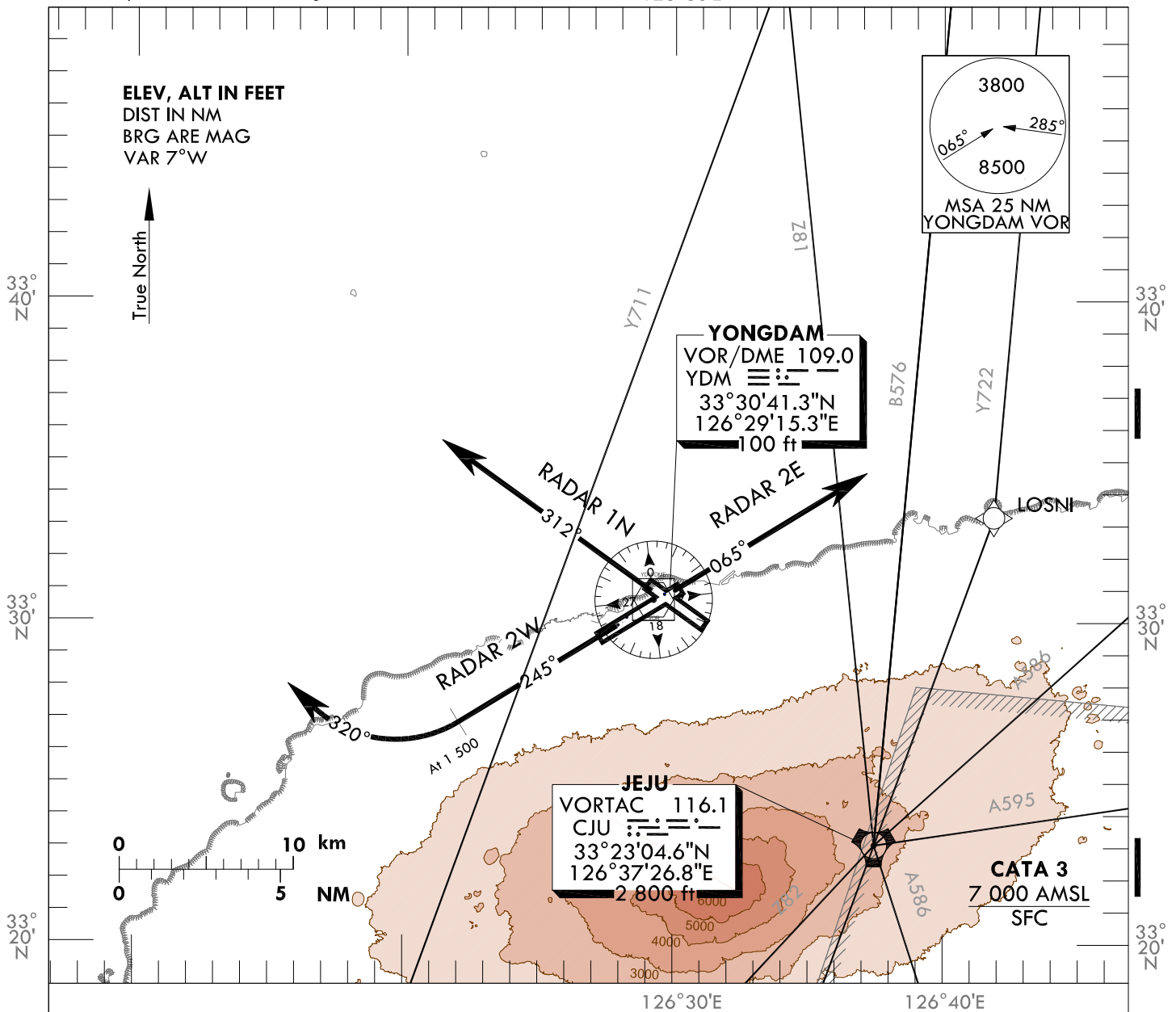
TRANSITION ALT 14 000  
TRANSITION LVL FL 140

JEJU DEP 119.225  
121.2  
JEJU TWR 118.125  
118.2

**JEJU/Jeju Intl(RKPC)**  
**RWY 07 RADAR 2E**  
**RWY 25 RADAR 2W**  
**RWY 31 RADAR 1N**

Note : Departure under ICAO Flight Procedures.

126°30'E



RADAR TWO ECHO DEPARTURE

TAKE OFF RWY 07 : Climb on runway heading until reaching 2 200 ft for RADAR VECTOR.  
\* Minumum 4.5% CG is required until 2 200 ft for ATC purpose.

RADAR TWO WHISKEY DEPARTURE

TAKE OFF RWY 25 : Climb on runway heading until reaching 1 500 ft, then turn Right HDG 320° and climb and maintain 3 000 ft for RADAR VECTOR.  
\* Minumum 4.0% CG is required until 3 000 ft for OBST avoidance.

RADAR ONE NOVEMBER DEPARTURE

TAKE OFF RWY 31 : Climb on runway heading until reaching 2 200 ft for RADAR VECTOR.  
\* Minumum 4.5% CG is required until 2 200 ft for ATC purpose.

NOTE : These procedures are available only for aircraft that don't satisfy RNAV 1 navigation specification

Change : Amended coordinate format.

**INTENTIONALLY**

**LEFT**

**BLANK**